

# MPTP-T60S-H2

**18G HDMI 2.0 Cost-effective Extender Set  
over CAT5e/CAT6**



**All Rights Reserved**

Version: MPTP-T60S-H2\_2024V1.1

### **Statement**

Thanks for purchasing this product, please read this user manual carefully before using this product. The functions described in this version are updated till March, 2020. In the constant effort to improve our product, we reserve the right to make functions or parameters changes without notice or obligation.

### **Safety Precaution**

- Do not dismantle the housing or modify the module to avoid electrical shock or burn.
- Using supplies not meeting the products' specifications may cause damage, deterioration or malfunction.
- Do not expose the unit to rain, moisture or install this product near water.
- Install the device in a place with fine ventilation.
- Do not twist or pull by force ends of the optical cable. It can cause malfunction.
- Do not use liquid or aerosol cleaners to clean this unit.
- Always unplug the power to the device before cleaning.
- Unplug the power when not used for a long period of time.
- Refer all servicing to qualified service personnel.

### **After-sales Service**

We provide limited warranty for the product within three years.

### Product Introduction

The MPTP-T60S-H2 is a cost-effective point-to-point extender set for HDMI V2.0 and IR signals; this kit supports 4K/UHD video @ 60 Hz with 4:4:4 Chroma sampling, as well as HDMI data rates up to 18Gbps, HDCP 2.2 compliant; It provides HDMI transmission up to 230 feet (70 meters) for 4K@60Hz 4:4:4, or 262 feet (80 meters) for 1080p over single CAT5e/6 cable. It supports video resolution down-scaling, the 4K input can be automatically downscale to 1080p output for compatibility with 1080p display.

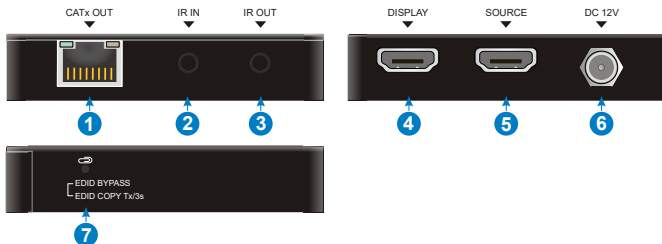
### Product Features

- Supports HDMI 2.0, up to 4K@60Hz 4:4:4, HDR10, 18G, HDCP 2.2.
- Extends signal up to 4K@70m and 1080p@80m over single CAT5e/6 cable.
- HDMI loop out on transmitter.
- Bi-directional IR pass-through.
- Supports video resolution down-scaling, the 4K input can be automatically degraded to 1080p output on receiver for compatibility with legacy 1080p display device.
- Features visually lossless compression with no latency.
- Smart EDID management.
- Compact design, easy to install and simple to operate.

## Package Contents

- 1x Transmitter (Tx)
- 1x IR Receiver
- 1x Power Adaptor (12V DC 1A)
- 1x User Manual
- 1x Receiver (Rx)
- 1x IR Emitter
- 2x Velcro Tape

## Transmitter Panel Description



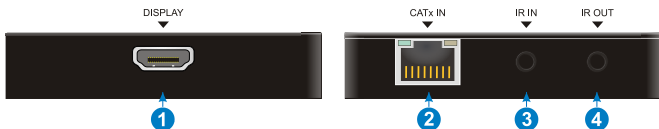
1. **CATx OUT:** RJ45 port to connect the CATx IN port of receiver by CATx cable. It supports 12V PoC to power the receiver. The orange LED illuminates when there is a valid HDMI signal input. The green LED illuminates when power is applied.
2. **IR IN:** 3.5mm mini jack to connect IR receiver for IR pass-through.
3. **IR OUT:** 3.5mm mini jack to connect IR emitter for IR pass-through.
4. **DISPLAY:** Type-A female HDMI port to connect HDMI display device.
5. **SOURCE:** Type-A female HDMI port to connect HDMI source device.
6. **DC 12V:** DC connector for the power adapter connection.
7. **EDID Management:**
  - **DID BYPASS:** Press the button with paper clip or other sharp tool to

learn the EDID from the remote display connected to the Receiver's HDMI out.

- **EDID COPY Tx/3s:** Press and hold the button for 3 seconds to copy the EDID from the local display connected to the Transmitter's HDMI out.
- **DEFAULT:** Factory default, the source device learns EDID from the TV which has the lowest resolution. Press and hold the button while the product is in turned-off period, and then release the button after 6 seconds of power on can restore the default setting.

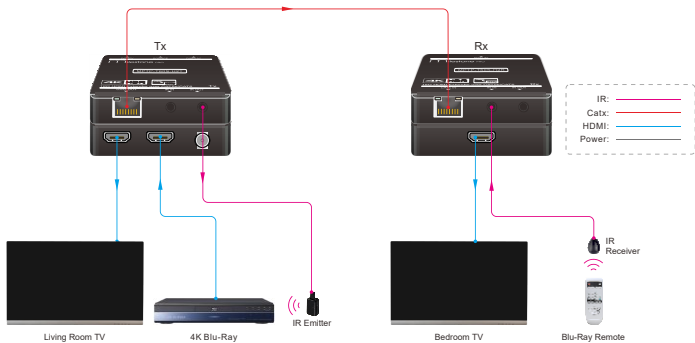
**Note:** If the standard resolution of the local display is lower than the receiver's, the unit will output the video with the lower resolution to ensure video can be shown on both displays.

### Receiver Panel Description



1. **DISPLAY:** Type-A female HDMI port to connect HDMI display device.
2. **CATx IN:** RJ45 port to connect the CATx OUT port of transmitter by CATx cable. It supports 12V PoC and the receiver can be powered from the transmitter. The orange LED illuminates when there is a valid HDMI signal input. The green LED illuminates when power is applied.
3. **IR IN:** 3.5mm mini jack to connect IR receiver for IR pass-through.
4. **IR OUT:** 3.5mm mini jack to connect IR emitter for IR pass-through.

## Connection Diagram



## Specifications

<b>Transmitter</b>	
Input	(1) SOURCE
Input Connector	(1) 19-pin type-A female HDMI
Output	(1) DISPLAY, (1) CATx OUT
Output Connector	(1) 19-pin type-A female HDMI, (1) RJ45
Control	(1) IR IN, (1) IR OUT
Control Connector	(2) 3.5mm mini jacks
<b>Receiver</b>	
Input	(1) CATx IN
Input Connector	(1) RJ45
Output	(1) DISPLAY
Output Connector	(1) 19-pin type-A female HDMI
Control	(1) IR IN, (1) IR OUT
Control Connector	(2) 3.5mm mini jacks
<b>General</b>	
Video Resolution	Up to 4K@60Hz 4:4:4, HDR10, up to 12bit
HDMI Audio Format	Supports LPCM 2ch, LPCM 5.1ch, LPCM 7.1ch, Dolby Digital 2ch, Dolby Digital 5.1ch, DTS 2ch, DTS 5.1ch, DTS 96/24 5.1ch.
Audio Sampling Rate(kHz)	Supports 32, 44.1, 48, 88.2, 96
Transmission Distance	4K/1080p ≤ 70 meters (230ft) Note that the CATx cable length should not be less than 15 meters for best video output.
HDMI Version	Up to HDMI 2.0
HDCP Version	Up to HDCP 2.2. The HDCP of output follows the HDCP version of display device.
EDID	EDID management
Power Supply	Input: 100VAC~240VAC, 50/60Hz; Output: 12VDC 1A
Power Consumption	4W (Max)

## 18G HDMI 2.0 Cost-effective Extender Set over CAT5e/CAT6

Operation Temperature	-5~55℃
Storage Temperature	-25~70℃
Relative Humidity	10%-90%
Dimensions (W*H*D)	80mm x 16.8mm x 80mm
Net Weight	Tx/Rx: 70g

*Note: The extender set does not support HBR audio*