

User Manual



MP-7RX

4K HDMI Wireless Screencast Receiver



All Rights Reserved

Version: MP-7RX_2025V1.0

Preface

Read this user manual carefully before using the product. Pictures shown in this manual are for reference only. Different models and specifications are subject to real product.

This manual is only for operation instruction, please contact the local distributor for maintenance assistance. The functions described in this version were updated till July, 25th, 2025. In the constant effort to improve the product, we reserve the right to make functions or parameters changes without notice or obligation. Please refer to the dealers for the latest details.

FCC Statement

This equipment generates, uses and can radiate radio frequency energy and, if not installed and used in accordance with the instructions, may cause harmful interference to radio communications. It has been tested and found to comply with the limits for a Class B digital device, pursuant to part 15 of the FCC Rules. These limits are designed to provide reasonable protection against harmful interference in a commercial installation.

Operation of this equipment in a residential area is likely to cause interference, in which case the user at their own expense will be required to take whatever measures may be necessary to correct the interference.

Any changes or modifications not expressly approved by the manufacture would void the user's authority to operate the equipment.



SAFETY PRECAUTIONS

To ensure the best from the product, please read all instructions carefully before using the device. Save this manual for further reference.

- Unpack the equipment carefully and save the original box and packing material for possible future shipment.
- Follow basic safety precautions to reduce the risk of fire, electrical shock and injury to persons.
- Do not dismantle the housing or modify the module. It may result in electrical shock or burn.
- Using supplies or parts not meeting the products' specifications may cause damage, deterioration or malfunction.
- Refer all servicing to qualified service personnel.
- To prevent fire or shock hazard, do not expose the unit to rain, moisture or install this product near water.
- Do not put any heavy items on the extension cable in case of extrusion.
- Do not remove the housing of the device as opening or removing housing may expose you to dangerous voltage or other hazards.
- Install the device in a place with fine ventilation to avoid damage caused by overheat.
- Keep the module away from liquids.
- Spillage into the housing may result in fire, electrical shock, or equipment damage. If an object or liquid falls or spills on to the housing, unplug the module immediately.
- Do not twist or pull by force ends of the optical cable. It can cause malfunction.
- Do not use liquid or aerosol cleaners to clean this unit. Always unplug the power to the device before cleaning.
- Unplug the power cord when left unused for a long period of time.
- Information on disposal for scrapped devices: do not burn or mix with general household waste, please treat them as normal electrical wastes.

Table of Contents

1. Product Introduction	1
1.1 Features	1
1.2 Package List	1
2. Specifications	2
3. Product Appearance	2
4. System Connection	3
5. Installation	3
6. Screen Casting Mode	4
7. Casting Screen	5
7.1 Cast the Windows PC Image	5
7.2 Cast image of the Android device	6
7.3 Cast image of the iPhone or Macbook	6
8. GUI Configuration	7

1. Product Introduction

Thanks for purchasing the MP-7RX wireless screencast receiver.

Our Wireless Screen Casting Device lets you effortlessly mirror your PC or mobile phone screen onto a larger display without a direct transmitter connection. Being compatible with Miracast and AirPlay, it supports a wide range of devices, including Android, iPhone, Windows, and macOS. It also delivers stunning 4K@30Hz visuals with low-latency 5G transmission up to 15 meters. With plug-and-play simplicity, 90°/270° image rotation, and easy web-GUI configuration, it's your ideal solution for seamless, high-quality screen sharing. Perfect for home entertainment, office presentations, classroom engagement, or conference room collaboration, this device adapts to any setting with ease.

1.1 Features

- Support Miracast and Airplay screencast protocols.
- Support up to 4K@30Hz Ultra High definition.
- Wireless transmission up to 15 meters.
- Low latency, with less than 50ms delay within 6 meters.
- Image rotation with 90° and 270° options available.
- 5G transmission, anti-interference, no jamming.
- Plug and play.
- Configure via web-GUI.
- Compact design and travel friendly.

1.2 Package List

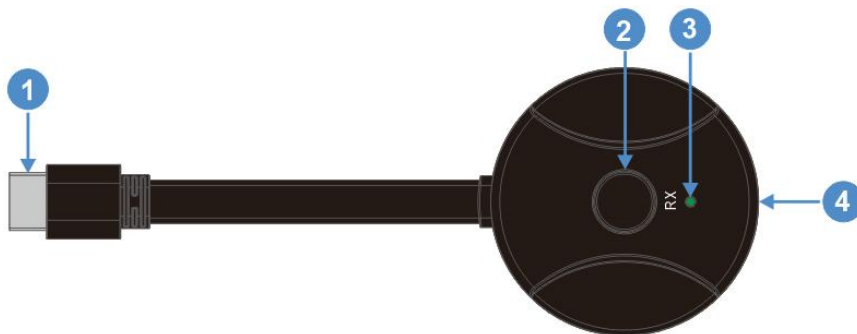
- 1 x MP-7RX
- 1 x User Manual

Note: please contact your distributor immediately if any damage or defect in the components is found.

2. Specifications

Interface	HDMI1.4
Bandwidth	10.8Gbps
Resolution	3840x2160@30Hz, 1920x1080@60Hz, 1280x720@60Hz, 720x480@60Hz.
Scaling	100%, 110%, 120%, 130%, 140%, 150%, Full Screen.
Transmission	Up to 15 meters (with less than 50ms delay within 6 meters)
Protocol	Miracast, Airplay
System	Android, IOS, macOS, Windows
Power Supply	DC 5V/1A
Operation Temperature	0°C ~ +50°C
Relative Humidity	10%-90%
Dimension (W x H x D)	65mm x 200mm x15.8 mm

3. Product Appearance



- HDMI Type-A Plug:** Output video and audio signal that receives a third-party device, such as your mobile phone or PC.
- Round Button:**
 - **Long-press (more than 5 seconds):** Factory reset the device.
 - **Short-press:** When no device is casting to the MP-7RX, a short press toggles between 'Wireless Display Mode' and 'Peer to Peer Mirroring Mode'. While a device is casting, a short press cycles the image rotation through 0°, 90°, and 270°.
- PWR LED:** When the power is on, the LED light illuminates green.
- USB-C Port:** Powers the device, requiring a 5V/1A input.

4. System Connection



5. Installation

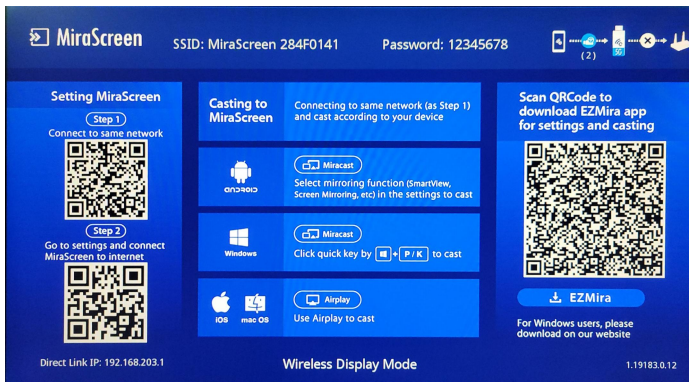
The plug-and-play design ensures effortless setup. Simply connect the HDMI plug to the display's HDMI port and power the device—that's all it takes.

6. Screen Casting Mode

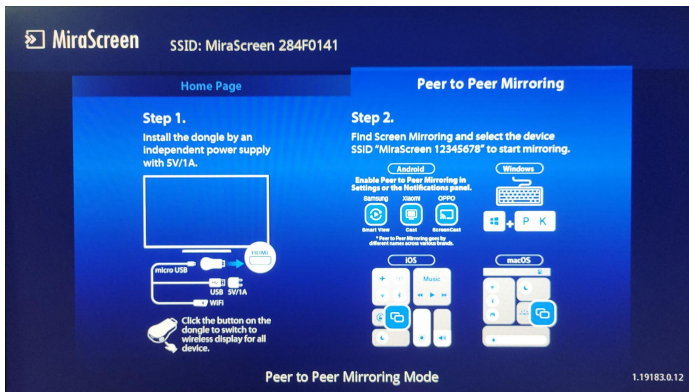
The MP-7RX offers two screen casting modes: Wireless Display Mode and Peer to Peer Mirroring Mode, both enabling seamless screen mirroring from your PC or mobile phone to a display. In Wireless Display Mode, the MP-7RX creates a Wi-Fi hotspot, allowing your device to connect and access the web-GUI for configuration. In contrast, Peer-to-Peer Mirroring Mode focuses solely on casting your screen to the display without the hotspot or configuration features.

When the device is properly installed, you can switch the mode by short-press the round button at the top of the device.

In Wireless Display Mode, the screen displays the below image.



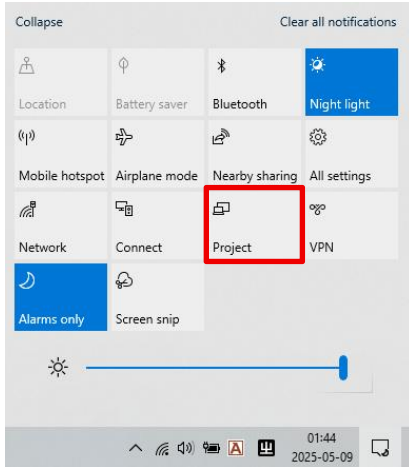
In Peer to Peer Mirroring Mode, the screen displays below image.



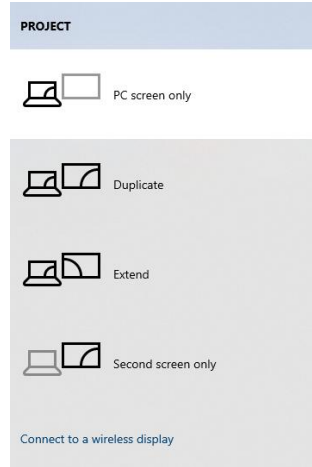
7. Casting Screen

7.1 Cast the Windows PC Image

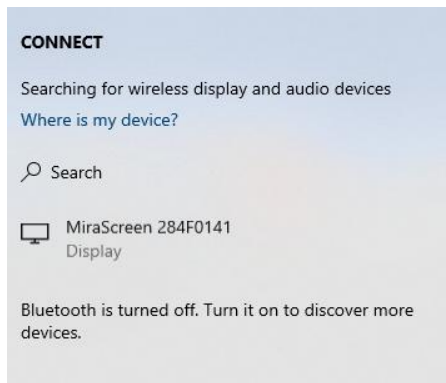
On your Windows OS, click the Notification icon at the bottom-right corner of the desktop.



Click the '**Project**' icon to view the prompt window shown below.

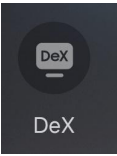


Select '**Connect to a wireless display**' to locate the MP-7RX, identified as MiraScreen 284F0141. Click the nickname to establish the connection, and your PC or mobile phone screen will be successfully mirrored onto the display.



7.2 Cast image of the Android device

Find the screencast tool in your Android device's tool list. For instance, on a Samsung phone, the 'DeX' feature enables you to effortlessly cast your screen to a display.



7.3 Cast image of the iPhone or Macbook

Find the screencast tool in your iPhone or MacBook's tool list. Select it, locate the MP-7RX's nickname, and connect to cast your screen to the

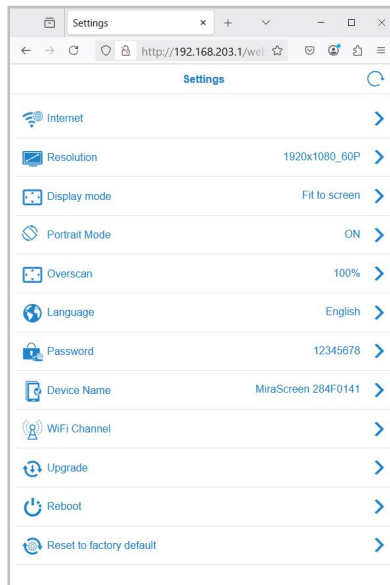


display.

8. GUI Configuration

To login the GUI, please disconnect the casting connection if the MP-7RX is in Peer to Peer Mirroring Mode.

1. Short-press the round button at the top of the device, and it will switch the mode to Wireless Display Mode (refer to the '6. Screen Casting Mode').
2. On your PC or mobile phone, connect to the Wi-Fi hotspot it created. SSID and Password are displayed at the top of the screen.
3. Run a browser on your PC or mobile phone, and input the IP address of the MP-7RX into the address field of the browser, and press Enter.
The IP address of the MP-7RX – Direct Link IP – is displayed at the bottom left of the screen.
4. Then the browser will load the GUI as below.



Now you can configure the MP-7RX.

Note that the 'Internet' option allows the MP-7RX to connect to a router, enabling an internet connection to check for firmware updates. You can then click the 'Upgrade' button to verify and install the latest firmware.