

User Manual

MP-WP-6K

Wallplate Control Keypad

6-Program buttons to send IP&RS232 commands to control third-party devices.



All Rights Reserved

Version: MP-WP-6K_2017V1.0

Preface

Read this user manual carefully before using the product. Pictures shown in this manual is for reference only. Different models and specifications are subject to real product.

This manual is only for operation instruction only. The functions described in this version are updated till August 30, 2017. In the constant effort to improve our product, we reserve the right to make functions or parameters changes without notice or obligation. Please refer to the dealers for the latest details.

Trademarks

Any other trademarks mentioned in this manual are acknowledged as the properties of the trademark owner. No part of this publication may be copied or reproduced without the prior written consent.

FCC Statement

This equipment generates, uses and can radiate radio frequency energy and, if not installed and used in accordance with the instructions, may cause harmful interference to radio communications. It has been tested and found to comply with the limits for a Class B digital device, pursuant to part 15 of the FCC Rules. These limits are designed to provide reasonable protection against harmful interference in a commercial installation.

Operation of this equipment in a residential area is likely to cause interference, in which case the user at their own expense will be required to take whatever measures may be necessary to correct the interference.

Any changes or modifications not expressly approved by the manufacture would void the user's authority to operate the equipment.



SAFETY PRECAUTIONS

To insure the best from the product, please read all instructions carefully before using the device. Save this manual for further reference.

- Unpack the equipment carefully and save the original box and packing material for possible future shipment
- Follow basic safety precautions to reduce the risk of fire, electrical shock and injury to persons.
- Do not dismantle the housing or modify the module. It may result in electrical shock or burn.
- Using supplies or parts not meeting the products' specifications may cause damage, deterioration or malfunction.
- Refer all servicing to qualified service personnel.
- To prevent fire or shock hazard, do not expose the unit to rain, moisture or install this product near water.
- Do not put any heavy items on the extension cable in case of extrusion.
- Do not remove the housing of the device as opening or removing housing may expose you to dangerous voltage or other hazards.
- Install the device in a place with fine ventilation to avoid damage caused by overheat.
- Keep the module away from liquids.
- Spillage into the housing may result in fire, electrical shock, or equipment damage. If an object or liquid falls or spills on to the housing, unplug the module immediately.
- Do not twist or pull by force ends of the optical cable. It can cause malfunction.
- Do not use liquid or aerosol cleaners to clean this unit. Always unplug the power to the device before cleaning.
- Unplug the power cord when left unused for a long period of time.
- Information on disposal for scrapped devices: do not burn or mix with general household waste, please treat them as normal electrical wastes.

Table of Contents

1. Introduction1

 1.1 Introduction to MP-WP-6K1

 1.2 Features1

 1.3 Package List1

2. Panel Description.....2

3. System Connection.....3

4. RS232 Control5

5. Control Software8

6. Specification.....12

7. Panel Drawing13

8. Troubleshooting & Maintenance14

9. Customer Service15

1. Introduction

1.1 Introduction to MP-WP-6K

MP-WP-6K is a Wallplate Control Keypad, used as a remote control to send IP command to control devices, with a software to define the knob and keys' function. The software features most of the frequently used functions which makes the usage of the device fastest and easiest.

MP-WP-6K only requires CATx cables to connect switch and controlled devices as a point-to-point or multipoint-to-multipoint control system, from a PoE-equipped network switch, to deliver both control signal and power, and provide fast, hassle-free installation.

MP-WP-6K provides a hassle-free means of controlling the AV system in a meeting room or classroom, and will always have a consistent control interface from room to room.

Note: The MP-WP-6K Wallplate Control Keypad only works with our MP-SC-5TDS Compact Scaler Switcher.

1.2 Features

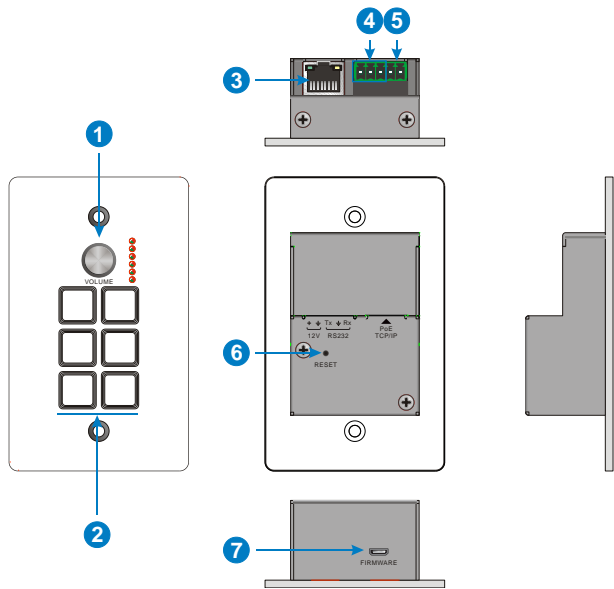
- Remote control panel for IP-based scaler and switcher products.
- Six customizable buttons, can be defined function and trigger mode by TCP/IP and RS232, with changeable labels, Allow system designers and installers to easily place printed labels on the controller under a protective cover.
- It can be powered by Ethernet (PoE).
- Elegant US one gang design with White Flat Paint coating.
- Crystal and backlit buttons with easy user-friendly customizable changeable labels.
- Dimension: 70mm long and 34mm wide.

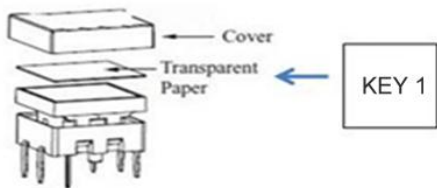
1.3 Package List

- | | |
|-------------------------------|--------------------------------|
| ● 1 x MP-WP-6K | ● 2 x Mounting Screw |
| ● 6 x Button Caps | ● 1 x Button Label (Film) |
| ● 1 x 3-pin Phoenix Connector | ● 1 x Power Adapter (12VDC 1A) |
| ● 1 x User Manual | |

Note: Please confirm if the product and the accessories are all included, if not, please contact with the dealers.

2. Panel Description



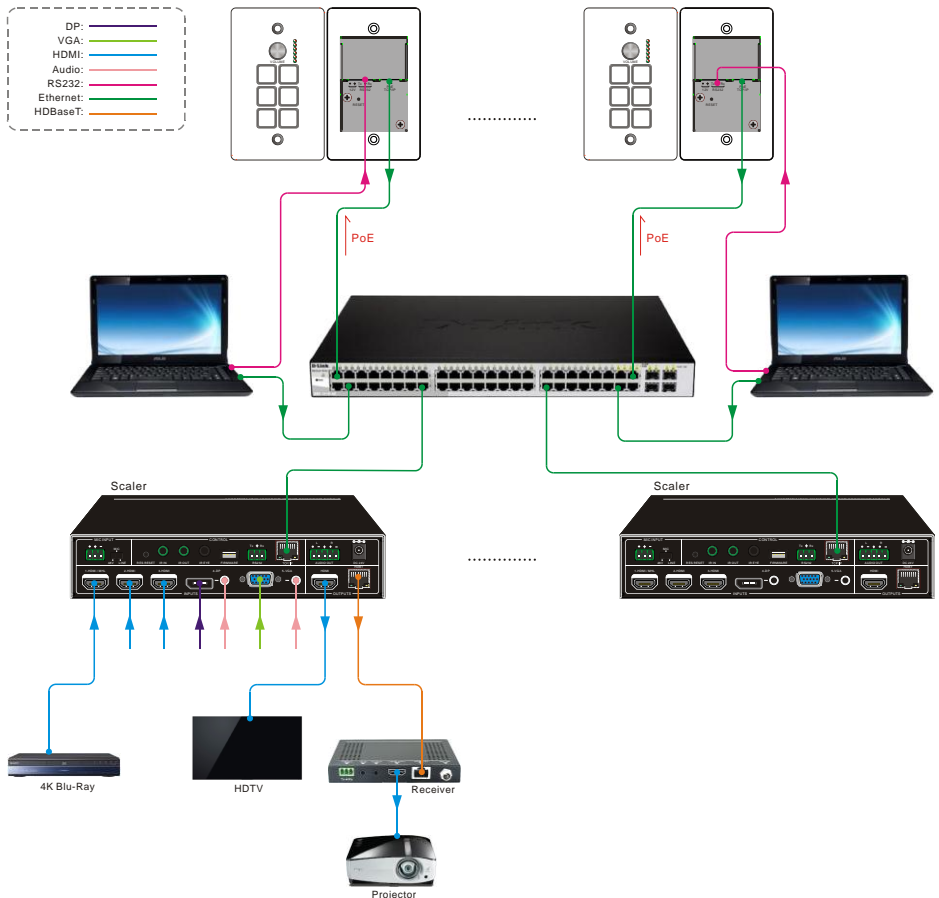
No.	Name	Description
①	VOLUME	Volume adjusting knob.
②	6 Keys	<p>(6) crystal and luminescent programmable buttons: Each key can be customized via the Control Software. Each label within a key can be easily changed. Simply select the label you need and change it as shown below:</p> 
③	POE TCP/IP	Ethernet interface for TCP/IP control with PoE function.
④	RS232	Serial port for RS232 control.
⑤	+12V	Connects with external 12VDC power adaptor.
⑥	RESET	Press this button to restore the factory default.
⑦	FIRMWARE	Micro USB port for updating firmware.

3. System Connection

Usage Precautions:

- System should be installed in a clean environment and has a prop temperature and humidity.
- All of the power switches, plugs, sockets and power cords should be insulated and safe.
- All devices should be connected before power on.

The demo system diagram as below:



- ① Connect one or more MP-WP-6Ks to the LAN ports of Switch, or control device (such as PC) to ETHERNET port.
- ② Connect the third-party devices (such as MP-SC-5TDS Compact Scaler Switchers) that need to be controlled to the LAN ports of Switch.
- ③ Connect the necessary source and display devices to the third-party devices (such as MP-SC-5TDS) according to their user manual.
- ④ If the RS232 communication software needed to be used to configure MP-WP-6K, connect the control PC to the RS232 port of MP-WP-6K.

4. RS232 Control

Basic Settings

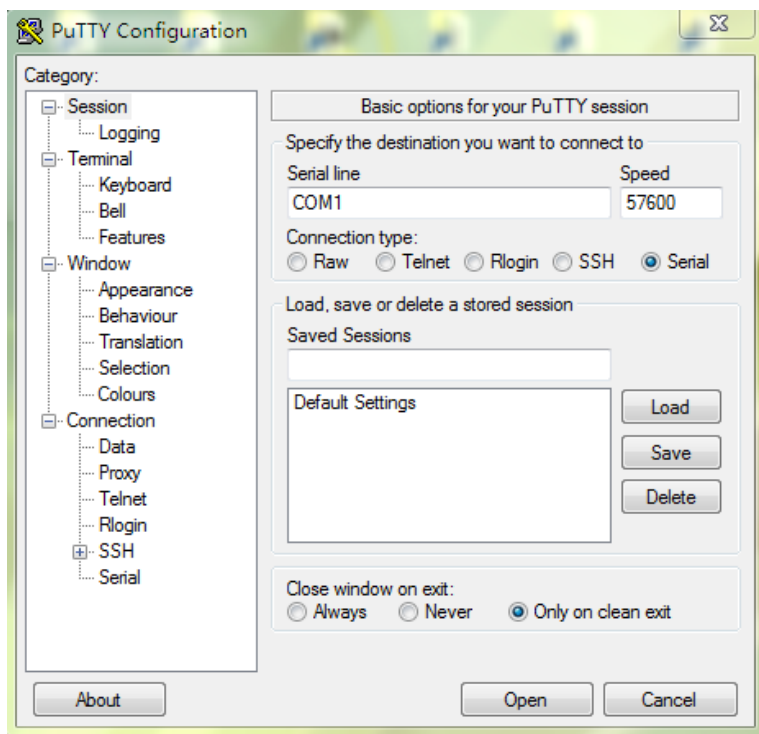
First, connect control PC to the RS232 port of the MP-WP-6K which is needed to be configured.

- Installation Copy the control software file to the control PC.
- Uninstallation Delete all the control software files in corresponding file path.

Here we take the software **putty.exe** as example. The icon is showed as below:



The configuration interface of this RS232 control software is showed as below:

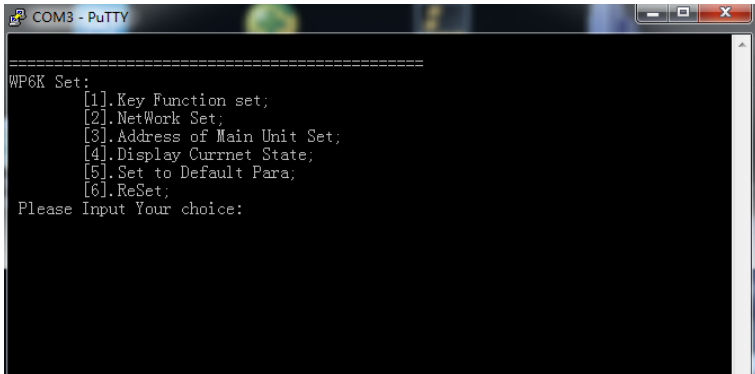


Please select the connection type (Serial), and then select the COM port. The speed

should be set as 57600.

Configuration Procedure:

- ① Type **any key**, and then press “**Enter**” on keyboard , the main menu will be shown as below:

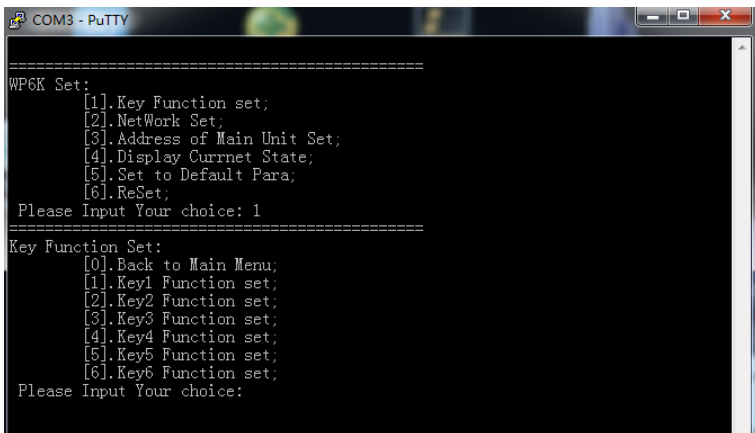


```

COM3 - PuTTY
=====
WP6K Set:
[1].Key Function set;
[2].NetWork Set;
[3].Address of Main Unit Set;
[4].Display Currnet State;
[5].Set to Default Para;
[6].ReSet;
Please Input Your choice:
  
```

There are 6 menu can be chosen: [1] Key Function Set; [2] Network Set; [3] Address of Main Unit Set; [4] Display Current State; [5] Set to Default Para; [6] Reset.

- ② Type “**1~6**” to select the corresponding menu, and then and then click “**send**” by mouse or press “**Enter**” on keyboard to enter next menu. Here we type “**1**” for example.



```

COM3 - PuTTY
=====
WP6K Set:
[1].Key Function set;
[2].NetWork Set;
[3].Address of Main Unit Set;
[4].Display Currnet State;
[5].Set to Default Para;
[6].ReSet;
Please Input Your choice: 1
=====
Key Function Set:
[0].Back to Main Menu;
[1].Key1 Function set;
[2].Key2 Function set;
[3].Key3 Function set;
[4].Key4 Function set;
[5].Key5 Function set;
[6].Key6 Function set;
Please Input Your choice:
  
```

- ③ Repeat the step 2 to enter the next menu to finish the configuration.

```
COM3 - PuTTY

=====
WP6K Set:
[1].Key Function set;
[2].NewWork Set;
[3].Address of Main Unit Set;
[4].Display Currnet State;
[5].Set to Default Para;
[6].ReSet;
Please Input Your choice: 1
=====
Key Function Set:
[0].Back to Main Menu;
[1].Key1 Function set;
[2].Key2 Function set;
[3].Key3 Function set;
[4].Key4 Function set;
[5].Key5 Function set;
[6].Key6 Function set;
Please Input Your choice: 1
=====
Key1 Type set:
[0].Back to Main Menu;
[1].Click Function Set;
[2].Long Press Function Set;
Please Input Your choice: 1
=====
Key1 Click Function set:
[0].Back to Main Menu;
[1].Select 1-HDMI as input;
[2].Select 2-HDMI as input;
[3].Select 3-HDMI as input;
[4].Select 4-DP as input;
[5].Select 5-VGA as input;
[6].Auto switching;
[7].Toggle switching;
[8].HDMI CEC on;
[9].HDMI CEC off;
[A].Main unit standby;
[B].Main unit wake up;
[C].Source power on;
[D].Source power off;
[E].Display power on;
[F].Display power off;
[G].Turn up source volume;
[H].Turn down source volume;
[Z].More funtions;
Please Input Your choice: 3
Key1 Click Configuration saved Successfully!
Press Any Key to Continue! █
```

5. Control Software

You can use Control Software to easily set key functions for every MP-WP-6K.

- ① Before connecting MP-WP-6Ks, PCs and the third-party devices (such as MP-SC-5TDS) into LAN, the network segments must be same, but the IP addresses are different.
- ② Installation/uninstallation of Control Software:
 - Installation: Copy the software file to the control PC.
 - Uninstallation: Delete all the software files in corresponding file path.
- ③ Double-click the below software icon to run this software:



The main window shown as below:

The screenshot shows the main window of the Control Software. It has a dark blue background. At the top left, there's a text box labeled 'WP6K_1'. Below it is a white rectangular area representing a keypad. The keypad has a volume knob at the top, followed by six square buttons labeled KEY1 through KEY6. A green box highlights the KEY1 through KEY6 area. At the bottom right of the keypad area, it says 'HW Version:1.1'. To the right of the keypad, there's a section titled 'Main Unit' with a blue highlighted text '<51ts>192.168.0.178'. Below that is a section titled 'WP6K List' with a blue highlighted text '<WP6K_1>192.168.0.180'. At the bottom right, there's a 'Search' button. Five green callout boxes with white text provide instructions: 'Rename the selected WP6K.' points to the 'WP6K_1' text box; 'Show IP addresses of all connected' points to the 'Main Unit' and 'WP6K List' sections; 'Click any key to customize its function.' points to the keypad buttons; 'Show IP addresses of all connected WP6K.' points to the 'WP6K List' section; and 'Click this to search all connected devices.' points to the 'Search' button.

Configuration Procedure:

Total six customizable buttons can be set via this control software. Here set the KEY1 for example:

- ① Select the MP-WP-6K on List.
- ② Click KEY 1 to enter the setting menu as below:

Key Label:

Key Action:

Key Function:

Main Unit:

- Auto switching
- Toggle switching
- HDMI CEC on
- HDMI CEC off
- Main unit standby
- Main unit wake up
- Source power on
- Source power off

- ③ Rename the Key 1.
- ④ Select the key action: **Click** or **Long press**.
- ⑤ Configure the functions for Key1, and all functions are shown as below:

Key Functions	Description	Note
Select 1-HDMI as input	Switch to 1-HDMI input.	
Select 2-HDMI as input	Switch to 2-HDMI input.	
Select 3-HDMI as input	Switch to 3-HDMI input.	
Select 4-DP as input	Switch to 4-DP input.	
Select 5-VGA as input	Switch to 5-VGA input.	
Auto switching	Enable auto-switching mode.	
Toggle switching	Switch the input source cyclically from 1-HDMI to 5-VGA.	

HDMI CEC on	Enable CEC function.	
HDMI CEC off	Disable CEC function.	
Main unit standby	Let the main unit enter standby mode.	
Main unit wake up	Wake up the main unit.	
Source power on	Turn on the source device.	CEC function should be enabled
Source power off	Turn off the source device.	
Display power on	Turn on the display device.	
Display power off	Turn off the display device.	
Turn up source volume	Turn up the volume of source device.	
Turn down source volume	Turn down the volume of source device.	
Source mute	Mute the source device.	
MIC mute	Mute the MIC audio.	
MIC unmute	Unmute the MIC audio.	
VGA audio mute	Mute the external audio of VGA.	
VGA audio unmute	Unmute the external audio of VGA.	
DP audio mute	Mute the DP embedded audio.	
DP audio unmute	Unmute the DP embedded audio.	
Turn up MIC volume	Turn up the MIC input audio.	
Turn down MIC volume	Turn down the MIC input audio.	
DP audio from Embedded	Select the DP embedded audio.	
DP audio from External	Select the external audio for DP.	
Front panel lock	Lock the front panel buttons.	
Front panel unlock	Unlock the front panel buttons.	
HDCP on	Enable HDCP output.	
HDCP off	Disable HDCP output.	
HDMI output off	Turn off HDMI output.	
HDMI output on	Turn on HDMI output.	
HDBT off	Turn off HDBaseT output.	
HDBT on	Turn on HDBaseT output.	
HDMI and HDBT on	Turn on HDMI and HDBaseT output	

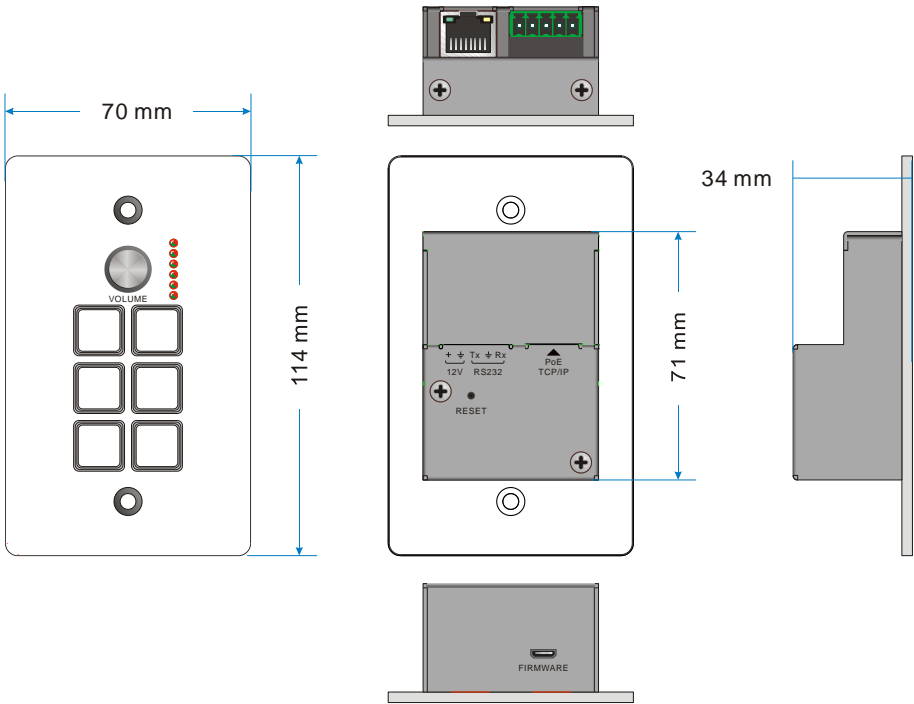
	synchronously.	
CEC play&pause	Play or pause the signal source.	CEC function should be enabled

- ⑥ Select the main unit which is needed to be control.
- ⑦ Press **OK** to save.

6. Specification

Control Port	(1) TCP/IP; (1) RS232
Control Connector	(1) RJ45; (1) 3-Pin Pluggable terminal block;
Baud Rate And Protocol	57600 baud, 8 data bits, 1 stop bit, no parity
Power Consumption	1W (Max)
Temperature	-20 ~ +70°C
Humidity	10% ~ 90%
Power Supply	Input: 100VAC~240VAC, 50/60 Hz; Output: 12VDC 1A
Net Weight	150g
Dimensions (W*H*D)	86mm x 86mm x 41mm

7. Panel Drawing



8. Troubleshooting & Maintenance

- When this keypad cannot work, please check and make sure the power cord connection is well, power connector cannot be mixed or connect wrong. Then restart, if still not work, the keypad may be broken. Please send it to the dealer for repairing.
- When connect unsuccessfully, please make sure the network segment of control PC and the keypad is same.
- When serial commands sending without function executed, please check the baud rate and make sure is correct, and the serial connection is well.

9. Customer Service

The return of a product to our Customer Service implies the full agreement of the terms and conditions hereinafter. These terms and conditions may be changed without prior notice.

1) Warranty

The limited warranty period of the product is fixed 3 (three) years.

2) Scope

These terms and conditions of Customer Service apply to the customer service provided for the products or any other items sold by authorized distributor only.

3) Warranty Exclusions:

- Warranty expiration.
- Factory applied serial number has been altered or removed from the product.
- Damage, deterioration or malfunction caused by:
 - ✓ Normal wear and tear.
 - ✓ Use of supplies or parts not meeting our specifications.
 - ✓ No certificate or invoice as the proof of warranty.
 - ✓ The product model showed on the warranty card does not match with the model of the product for repairing or had been altered.
 - ✓ Damage caused by force majeure.
 - ✓ Servicing not authorized by distributor.
 - ✓ Any other causes which does not relate to a product defect.
- Shipping fees, installation or labor charges for installation or setup of the product.

4) Documentation:

Customer Service will accept defective product(s) in the scope of warranty coverage at the sole condition that the defect has been clearly defined, and upon reception of the documents or copy of invoice, indicating the date of purchase, the type of product, the serial number, and the name of distributor.

Remarks: For further assistance or solutions, please contact your local distributor.

