

User Manual



MP-WP-DAN Dante Wall Plate



All Rights Reserved

Version: MP-WP-DAN_2025V1.0

Preface

Read this user manual carefully before using the product. Pictures shown in this manual are for reference only. Different models and specifications are subject to real product.

This manual is only for operation instruction, please contact the local distributor for maintenance assistance. The functions described in this version were updated till October, 2025. In the constant effort to improve the product, we reserve the right to make functions or parameters changes without notice or obligation. Please refer to the dealers for the latest details.

FCC Statement

This equipment generates, uses and can radiate radio frequency energy and, if not installed and used in accordance with the instructions, may cause harmful interference to radio communications. It has been tested and found to comply with the limits for a Class B digital device, pursuant to part 15 of the FCC Rules. These limits are designed to provide reasonable protection against harmful interference in a commercial installation.

Operation of this equipment in a residential area is likely to cause interference, in which case the user at their own expense will be required to take whatever measures may be necessary to correct the interference. Any changes or modifications not expressly approved by the manufacture would void the user's authority to operate the equipment.



1. Product Introduction

Thank you for choosing the MP-WP-DAN audio wall plate. It receives signal from Bluetooth and converts them into Dante network data for output. One-touch pairing simplifies connection. The device is powered via PoE from the Ethernet switch. It also supports control via the Dante controller.

1.1 Features

- Class 2, communication distance at least 10m.
- Support one-touch pairing.
- Support PoE power supply from Ethernet switch.
- Controllable via Dante Controller.

1.2 Package List

1x MP-WP-DAN

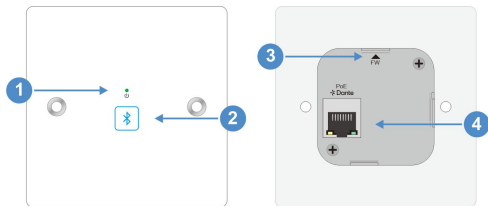
1x User Manual

Note: Please contact your distributor immediately if any damage or defect in the components is found.

2. Specification

Transmission	
Input	Bluetooth
Output	Dante
Audio	
Frequency Response	20Hz-20kHz ± 3 dB
THD+N	<0.05% @1kHz
SNR	>105dB
Sample Rate	44.1/48kHz
Bit Depth	24bit
Protocol	A2DP/HFP/AES67
General	
Power Supply	PoE
Operation Temperature	-5°C ~ +55°C
Storage Temperature	-20°C ~ +70°C
Relative Humidity	10% ~ 90%
Dimension (W*H*D)	69.85mm x 114.3mm x 34.5mm
Net Weight	115g

3. Panel Description

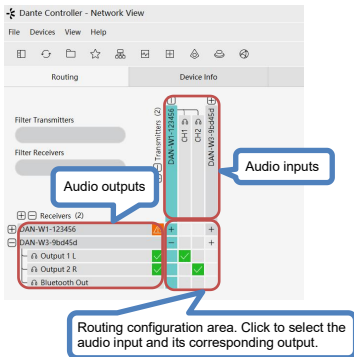


No.	Name	Description
1	POWER INDICATOR	1x green LED, power input indicator. <ul style="list-style-type: none"> ● Green on: device on. ● LED off: device off.
2	PAIRING BUTTON	1x Illuminated buttons, for device pairing <ul style="list-style-type: none"> ● Light flash: pairing... ● Light on: paired ● Light off: pairing failed Press it for pairing or Bluetooth off. If there is no Bluetooth pairing in 1 minute, Bluetooth is turned off. Press for 5s can reset device.
3	FW	1x USB-C, FW upgrade.
4	Dante	1x RJ45, transmit network audio and support receive power via PoE.



Dante Controller is available both for Windows and Mac OS X. It is open for registered www.audinate.com users to download directly from the website.

5.1 Network View



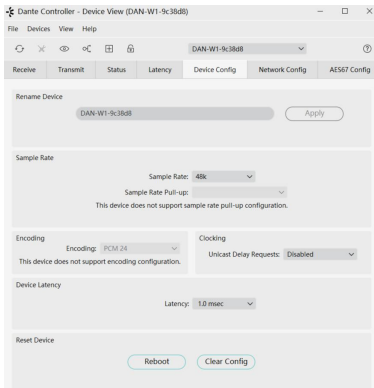
5.2 Device View

If more than 2 receivers need to receive audio, please click the device to enter **Device View** and create a new multicast flow.



Dante Wall Plate

User can modify device parameters in **Devic Config** page.



Note: For more details about Dante Controller, please download the user guideline at the Audinate website: www.audinate.com