

User Manual



MPTP-HDT100WPTX

100m USB 5Gbps Extender over HDBT



All Rights Reserved

Version: MPTP-HDT100WPTX_2025V1.0

Preface

Read this user manual carefully before using the product.

Pictures shown in this manual are for reference only. Different models and specifications are subject to real product.

This manual is only for operation instruction, please contact the local distributor for maintenance assistance. The functions described in this version were updated till September 20, 2024. In the constant effort to improve the product, we reserve the right to make functions or parameters changes without notice or obligation. Please refer to the dealers for the latest details.

FCC Statement

This equipment generates, uses and can radiate radio frequency energy and, if not installed and used in accordance with the instructions, may cause harmful interference to radio communications. It has been tested and found to comply with the limits for a Class B digital device, pursuant to part 15 of the FCC Rules. These limits are designed to provide reasonable protection against harmful interference in a commercial installation.

Operation of this equipment in a residential area is likely to cause interference, in which case the user at their own expense will be required to take whatever measures may be necessary to correct the interference.

Any changes or modifications not expressly approved by the manufacture would void the user's authority to operate the equipment.



SAFETY PRECAUTIONS

To ensure the best from the product, please read all instructions carefully before using the device. Save this manual for further reference.

- Unpack the equipment carefully and save the original box and packing material for possible future shipment.
- Follow basic safety precautions to reduce the risk of fire, electrical shock and injury to persons.
- Do not dismantle the housing or modify the module. It may result in electrical shock or burn.
- Using supplies or parts not meeting the products' specifications may cause damage, deterioration or malfunction.
- Refer all servicing to qualified service personnel.
- To prevent fire or shock hazard, do not expose the unit to rain, moisture or install this product near water.
- Do not put any heavy items on the extension cable in case of extrusion.
- Do not remove the housing of the device as opening or removing housing may expose you to dangerous voltage or other hazards.
- Install the device in a place with fine ventilation to avoid damage caused by overheat.
- Keep the module away from liquids.
- Spillage into the housing may result in fire, electrical shock, or equipment damage. If an object or liquid falls or spills on to the housing, unplug the module immediately.
- Do not twist or pull by force ends of the optical cable. It can cause malfunction.
- Do not use liquid or aerosol cleaners to clean this unit. Always unplug the power to the device before cleaning.
- Unplug the power cord when left unused for a long period of time.
- Information on disposal for scrapped devices: do not burn or mix with general household waste, please treat them as normal electrical wastes.

1. Product Introduction

Thanks for choosing the 100m USB 5Gbps extender. The extender is designed to transmit USB signal up to 100m distance. MPTP-HDT100WPTX is the host port of the wall plate type extender, it contains one Type-C for PC or laptop connect. It also has two local USB-A port share 5V 500mA power supply for speakerphone and headset. The extender also supports two-way 24V PoC power.

1.1 Features

- USB3.2 Gen1 data transmission rate up to 5Gbps;
- Support extend USB signal up to 100m via CAT6a cable;
- Support RS232 pass-through and upgrade;
- Support DIP switch to switch PoC ON/OFF;
- Two-way 24V PoC power supply.

1.2 Package List

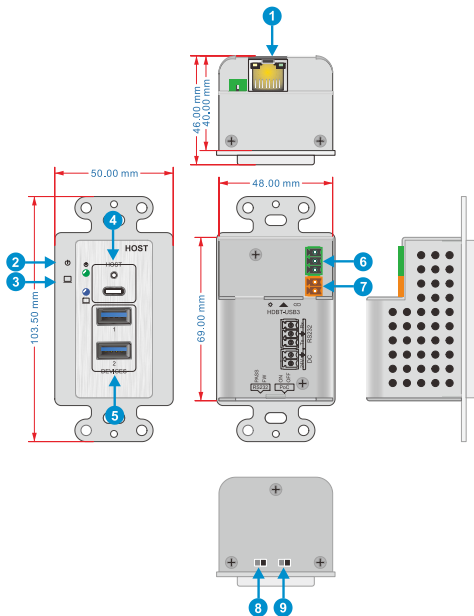
- 1x MPTP-HDT100WPTX
- 1x 3-pin Terminal Block
- 1x User Manual

Note: Please contact your distributor immediately if any damage or defect in the components is found.

2. Specification

MPTP-HDT100WPTX	
Host Connector	(1) Type-C USB
Devices Connector	(2) Type-A USB
Devices Power	5V 500mA total
USB Version	USB 5Gbps
Control Part	
Control	(1) DIP switch
Control Connector	(1)2-pin DIP switch
General	
Transmit distance	Up to 100m with CAT6A cable
PoC standard	Two-way 24V PoC
Data Rate	5Gbps
Operation Temperature	-10℃ ~ +55℃
Storage Temperature	-25℃ ~ +70℃
Relative Humidity	10% ~ 90%
External Power Supply	DC24V 1.5A
Power Consumption	30W (Max)
Dimension (W*H*D)	48.0mm x 69.0mm x 39.4 mm
Net Weight	130g

3. Panel Description



No.	Name	Description
1	HDBT-USB3	1x RJ45 port for connecting with the device unit of the extender. The yellow light indicates the connection status of the HDBT, and the green LED is the data light.
2	Power LED	Illuminates green when power on.
3	HOST LED	Illuminates blue when HOST connected.
4	HOST	1x Type-C USB 5Gbps, connecting to the PC/Laptop.
5	DEVICES	2x Type-A USB 5Gbps, shared 5V500mA total and limit 5V500mA per port. Connecting to the speakerphone and headset.
6	RS232	1x 3-pin terminal block for pass-through and upgrade.

7	DC 24V	Connects with 24V DC power adaptor.
8	RS232	1x 2-pin DIP switch for select the RS232 port function. PASS: RS232 pass-through. FW: Firmware upgrade.
9	PoC	1x DIP switch, turn on/off the PoC.

4. HDBT-USB3

1x RJ45 port is used for data transmission, and supports 24V PoC power supply and 12-48V power supply;

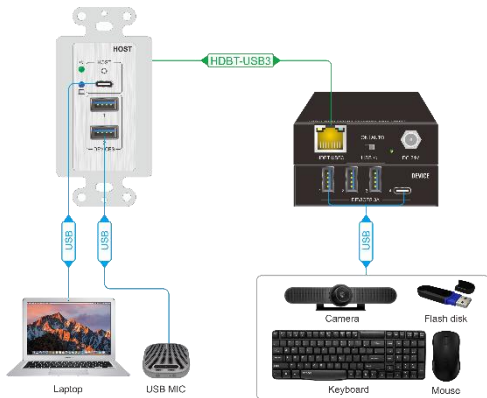
The yellow light indicates the connection status, and the green light indicates the data transmission status.



Status	Definition
Yellow light off	No CAT cable / active connection.
Yellow light blink	Connecting or unstable connection between host and device.
Yellow light lit	CAT cable is stably connected between host and device.
Green light off	No USB data signal is transmitting.
Green light flashes regularly (for every 500ms)	USB 2.0 data transmitting.
Green light flashes irregularly (for uncertain interval)	USB data transmission fault.
Green light lit	USB3.0 data transmitting.

5. System Diagram

- Make sure all components and accessories included before installation.
- System should be installed in a clean environment with proper temperature and humidity.
- All of the power switches, plugs, sockets, and power cords should be insulated and safe.
- All devices should be connected before power on.



6. Panel Drawing

